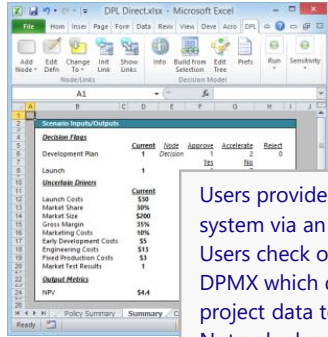


DPMX System Overview

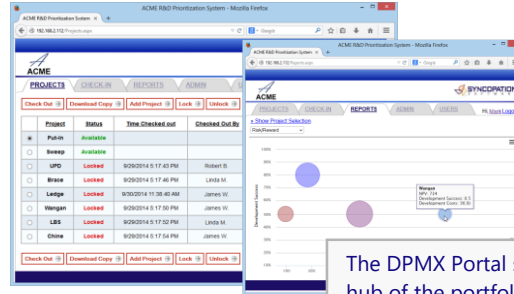
Excel Inputs



Users provide inputs to the system via an Excel spreadsheet. Users check out a project from DPMX which downloads the project data to a spreadsheet. Not only does this furnish a familiar environment for data elicitation, it also provides real time feedback of project valuation metrics, increasing ownership and reducing errors. When the user checks the spreadsheet back into DPMX the data is uploaded to the central portfolio database.

Input data for all projects and portfolio results are stored in the database, with tracking of changes and retention of historical versions.

DPMX Portal



The DPMX Portal serves as the hub of the portfolio review process, from collecting data to presenting on-demand results.

Database (Oracle, MS SQL Server, etc.)

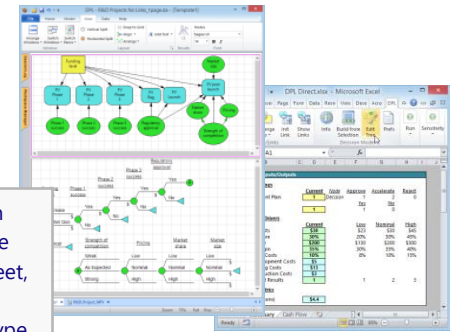


DPL Portfolio



DPL Portfolio is the analytics backbone for the system. It is a class leading decision analytic software application that offers robust decision analytic capabilities. DPL Portfolio calculates base case and probabilistic results for each project in the overall portfolio.

Template Models (DPL Decision Tree + Excel Spreadsheet)



Template models, each an intuitive DPL Decision Tree and a cash flow spreadsheet, define the structure and metrics for each project type.